

- NOTES:
- FOR REFERENCE UNLESS PROPERLY ENDORSED. FOR ADDITIONAL DETAILS AND SPECIFICATIONS, CONSULT YASKAWA AMERICA, INC.
  - DIMENSIONS ARE IN INCHES[MILLIMETERS]
  - USE APPROPRIATE TYPE RATED HUBS OR FITTINGS TO MAINTAIN ENCLOSURE RATING.
  - HATCHED AREA INDICATES PERMISSIBLE CONDUIT ENTRANCE AREA.
  - FANS, FILTERS AND/OR CLOSING PLATES ARE SUPPLIED AS NEEDED PER OPTION SELECTIONS.

**YASKAWA**

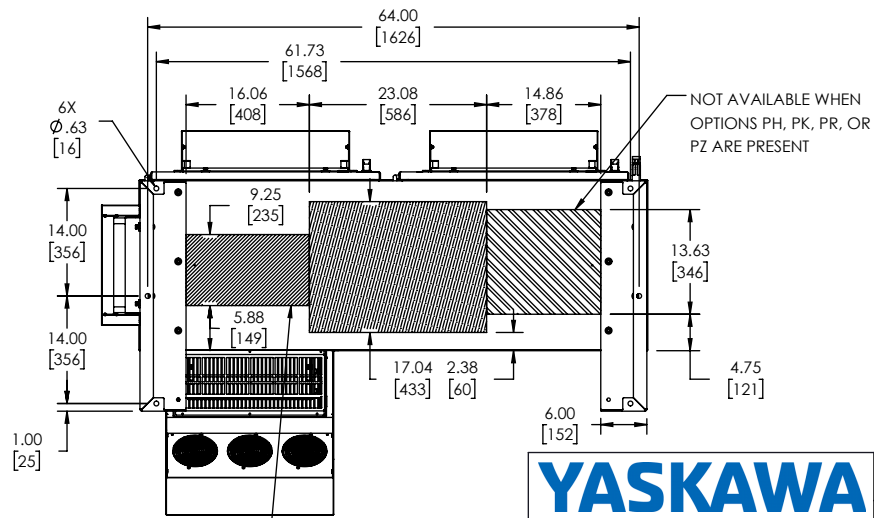
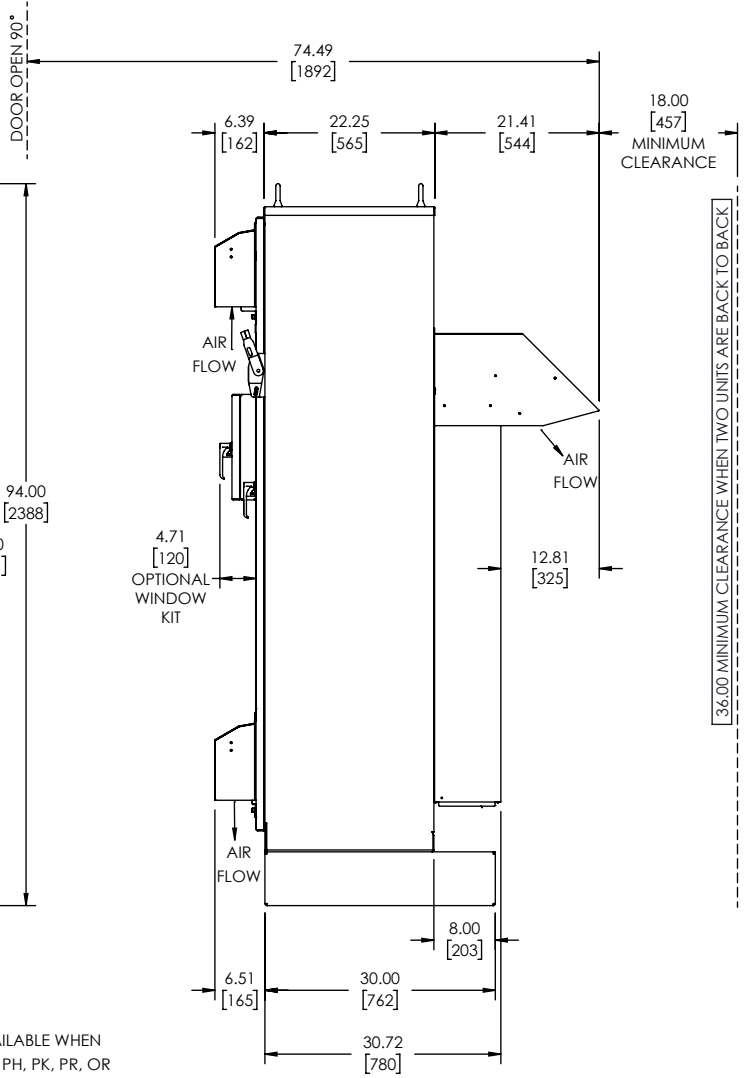
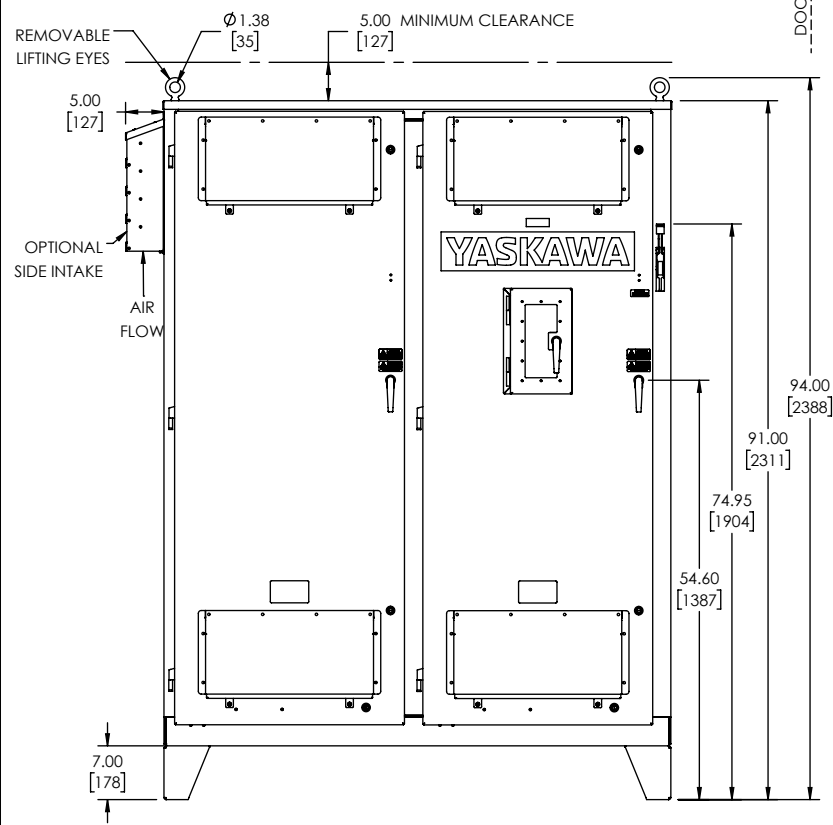
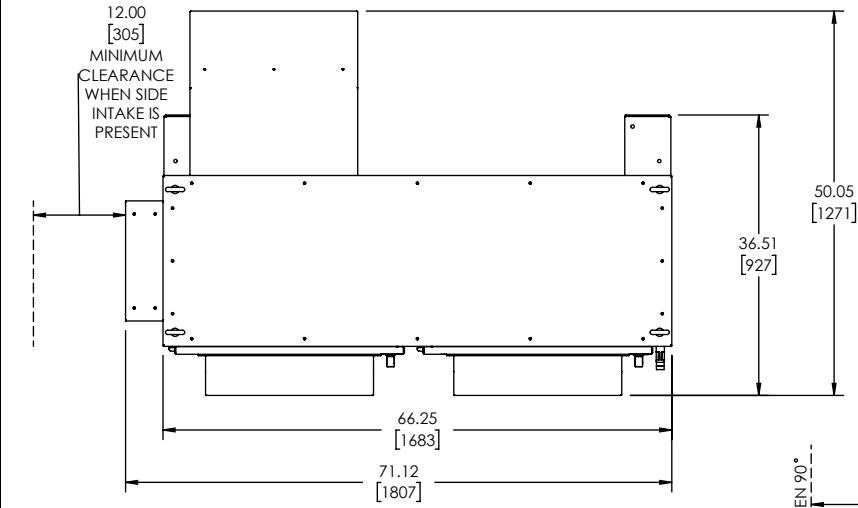
THIS DOCUMENT AND INFORMATION CONTAINED IN IT ARE CONFIDENTIAL AND CANNOT BE COPIED OR DISCLOSED IN WHOLE OR IN PART WITHOUT THE EXPRESS WRITTEN CONSENT OF YASKAWA AMERICA, INC.

UNITS: INCHES      SCALE: NONE

ORIGINAL DESIGN: <b>P. Johnson</b>	DATE: <b>07/20/2021</b>	TITLE: <b>DIMENSION DRAWING, HV WM FP, 600, 3R, F2</b>		
DRAWN: <b>P. Johnson</b>	DATE: <b>07/20/2021</b>	SIZE: <b>B</b>	REVISION: <b>00</b>	PAGE: <b>1 OF 2</b>
CHECKED: <b>A. Guy</b>	DATE: <b>07/21/2021</b>	DRAWING #:		
APPROVED: <b>R. Jensen</b>	DATE: <b>07/22/2021</b>	<b>DD.HWF.3R.F2.01</b>		

NOT AVAILABLE WHEN OPTION PR IS USED IN CONJUNCTION WITH OPTIONS PH, PK, OR PZ

36.00 MINIMUM CLEARANCE WHEN TWO UNITS ARE BACK TO BACK



**YASKAWA**

THIS DOCUMENT AND INFORMATION CONTAINED IN IT ARE CONFIDENTIAL AND CANNOT BE COPIED OR DISCLOSED IN WHOLE OR IN PART WITHOUT THE EXPRESS WRITTEN CONSENT OF YASKAWA AMERICA, INC.

UNITS: INCHES      SCALE: NONE

ORIGINAL DESIGN: P. Johnson	DATE: 07/20/2021
DRAWN: P. Johnson	DATE: 07/20/2021
CHECKED: A. Guy	DATE: 07/21/2021
APPROVED: R. Jensen	DATE: 07/22/2021

TITLE: <b>DIMENSION DRAWING, HV WM FP, 600, 3R, F2</b>		
SIZE: B	REVISION: 00	PAGE: 2 OF 2
DRAWING #:		
<b>DD.HWF.3R.F2.01</b>		

NOT AVAILABLE WHEN OPTION PR IS USED IN CONJUNCTION WITH OPTIONS PH, PK, OR PZ

NOT AVAILABLE WHEN OPTIONS PH, PK, OR PZ ARE PRESENT